



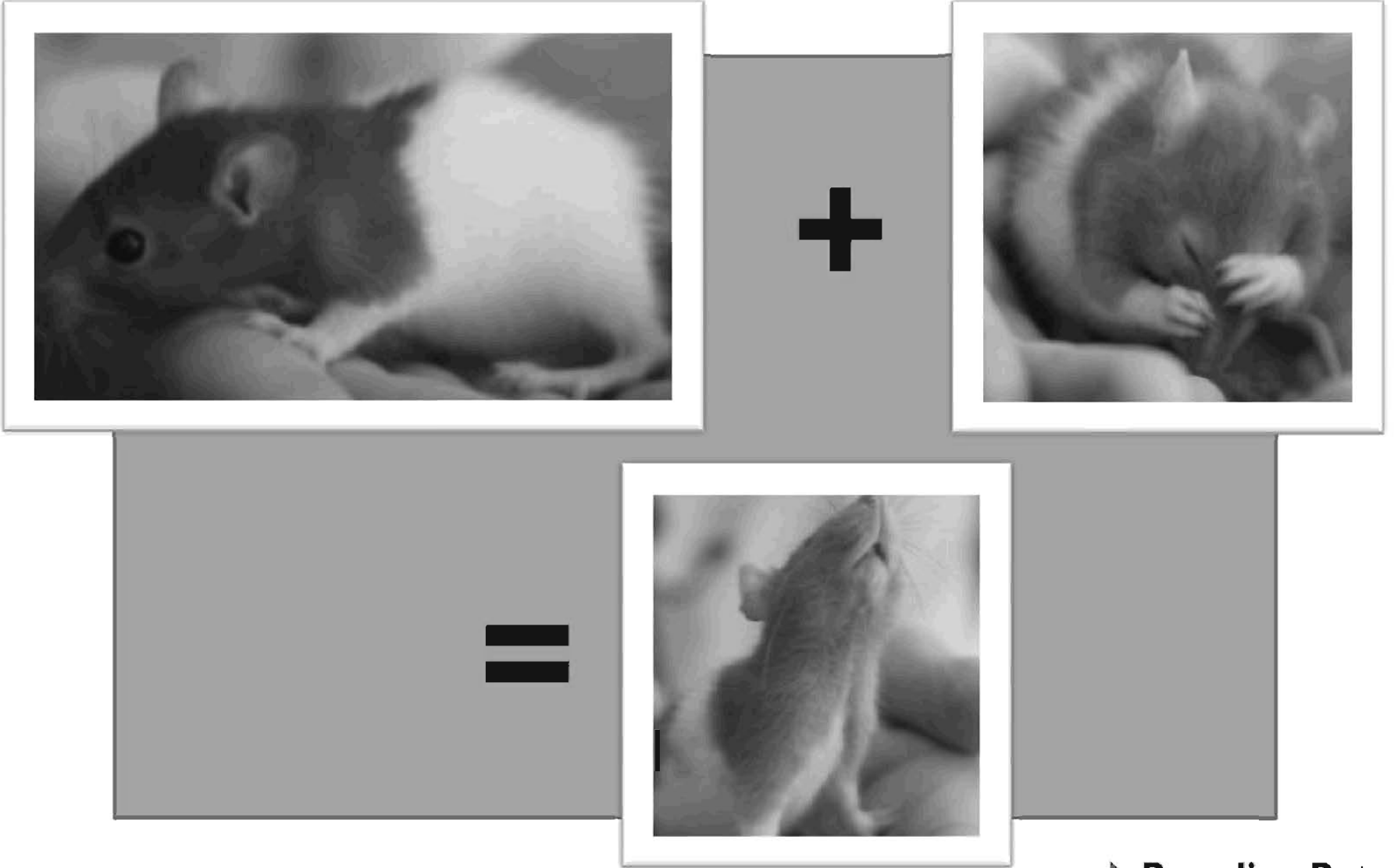
▶ Hog Pens

1862 — 1908 — 1957 — 2007



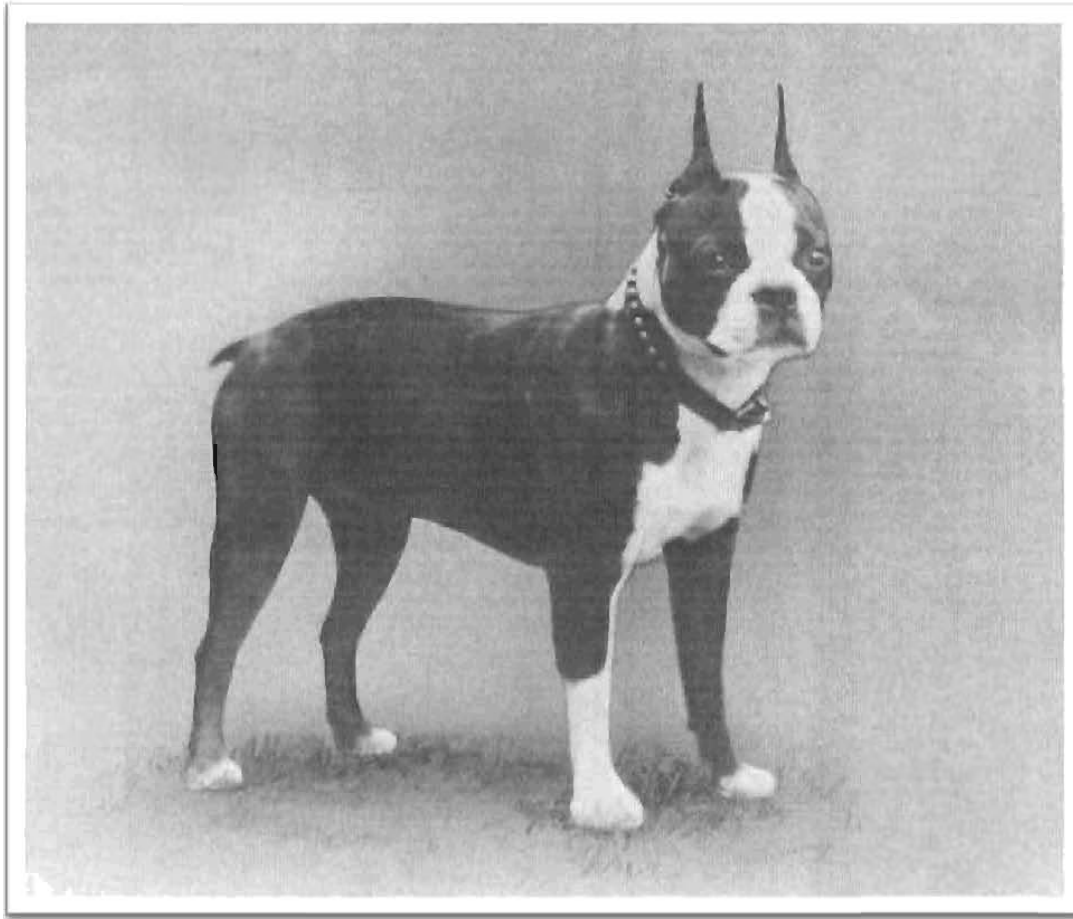
▶ **Guinea Pig Research**





1862 1907 1911 1957 2007

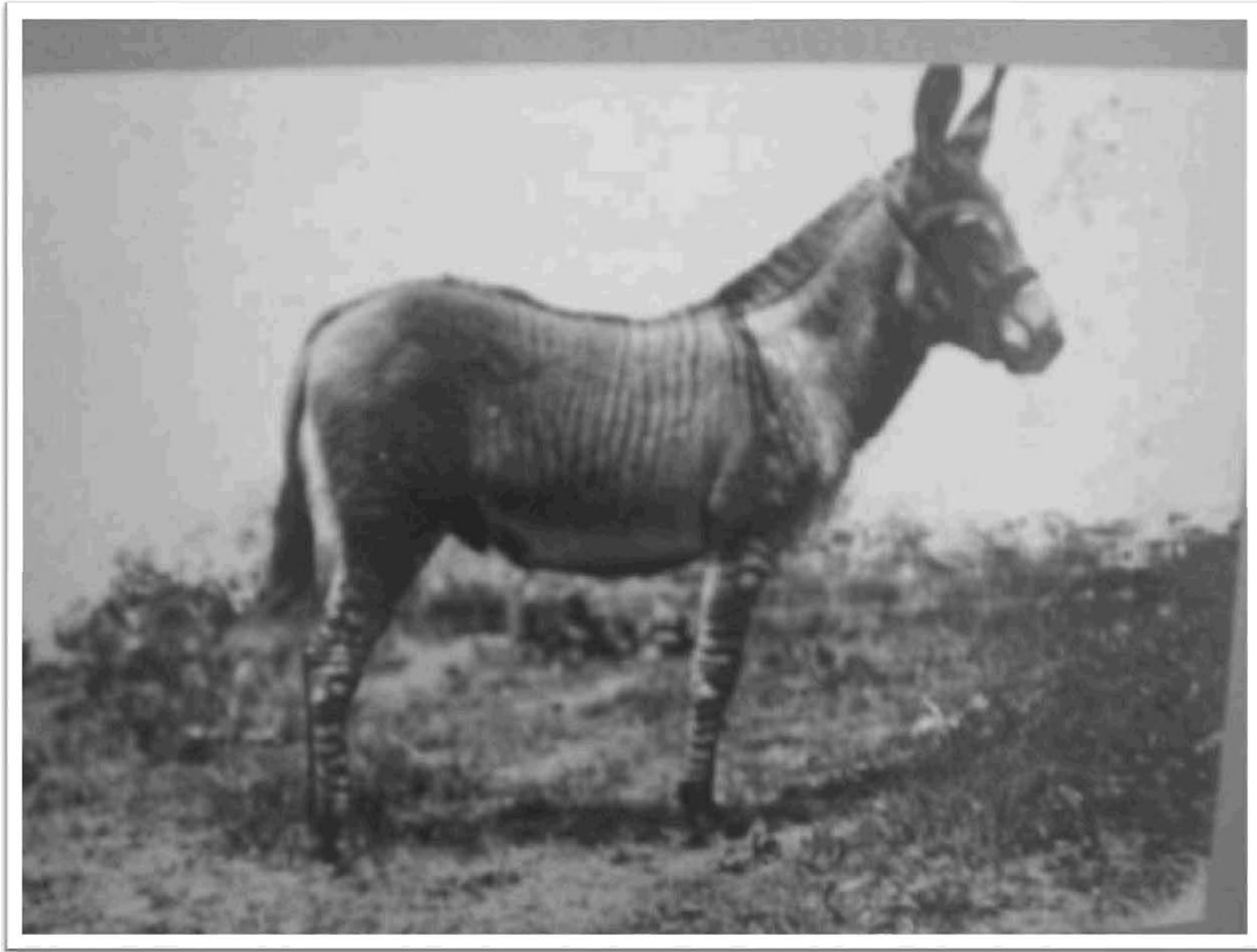
► **Breeding Rats**

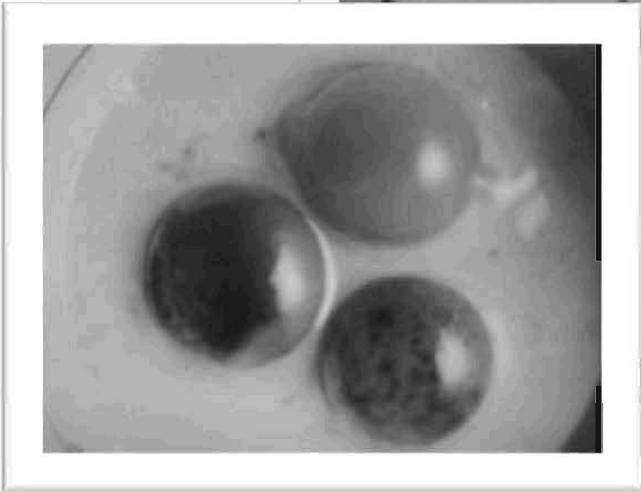


▶ **Sharkey and the Theory of Telegony**









► Eggs-periments

1862 1910 1957 2007



► Overviews of the farm





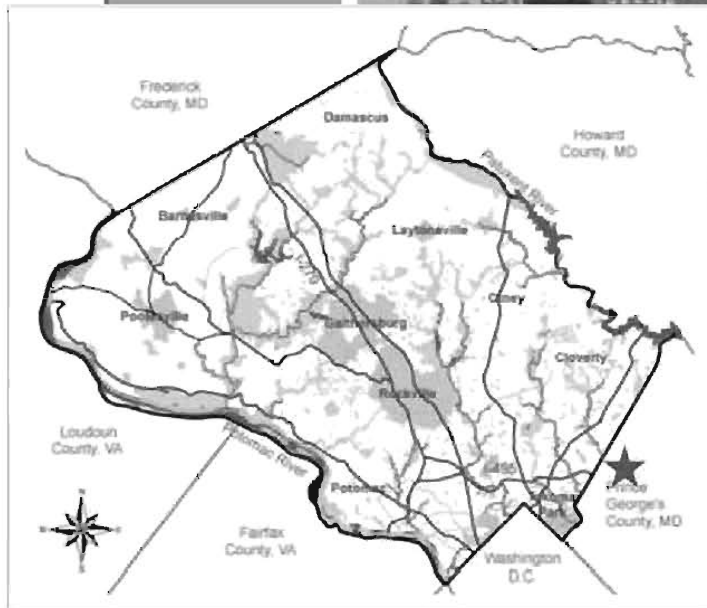
► Stables in the snow





►The Farm and its Workers



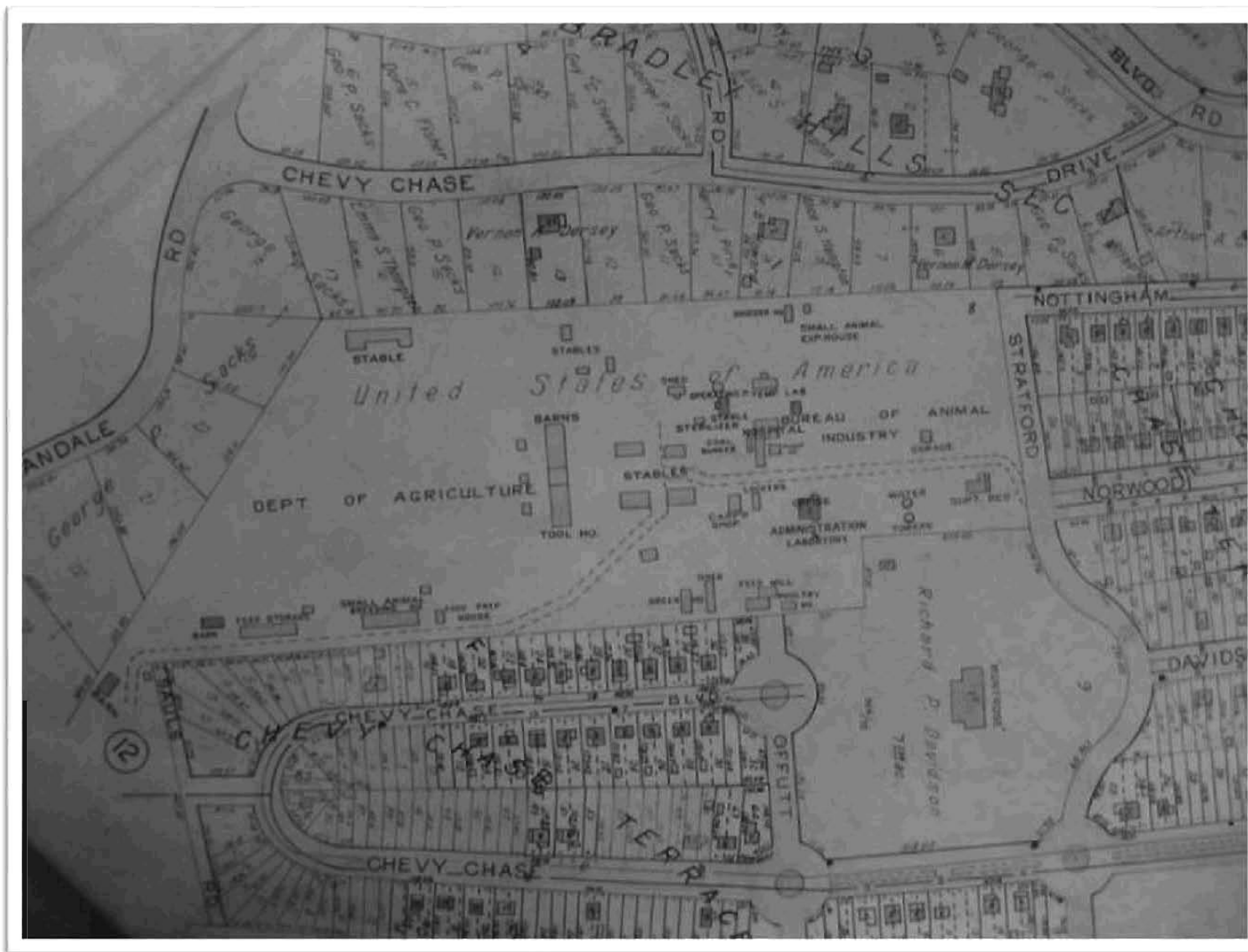


► **Beltsville Agricultural Research Center**



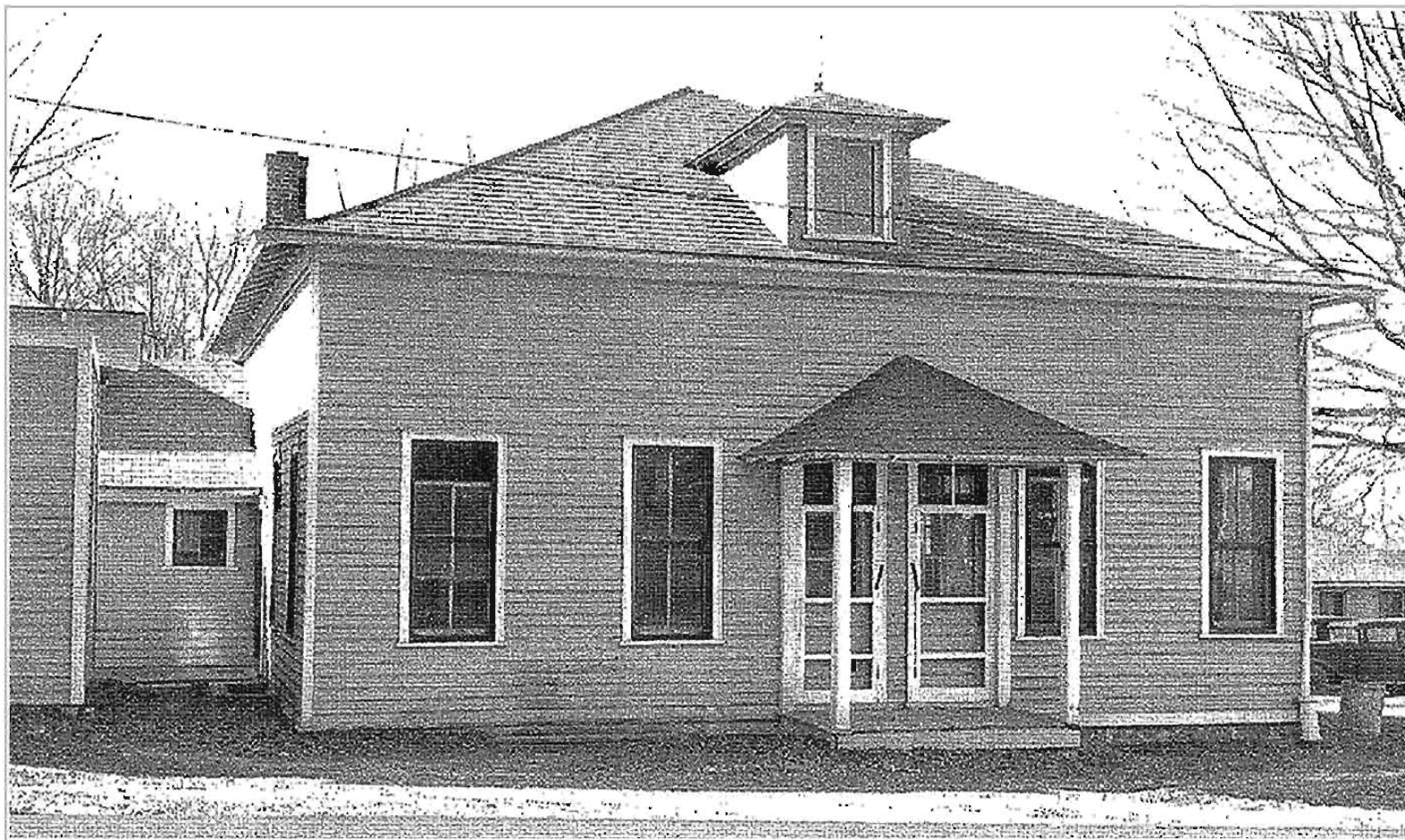


► Eradicating Animal Diseases



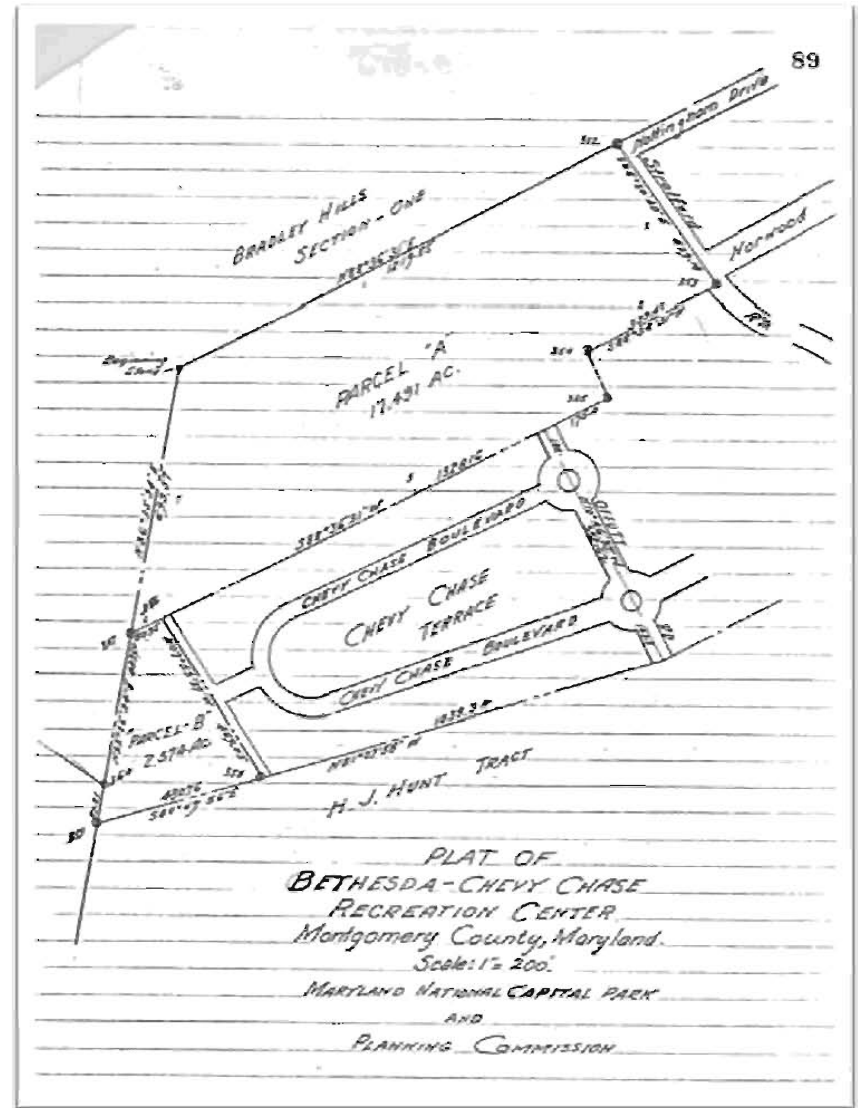
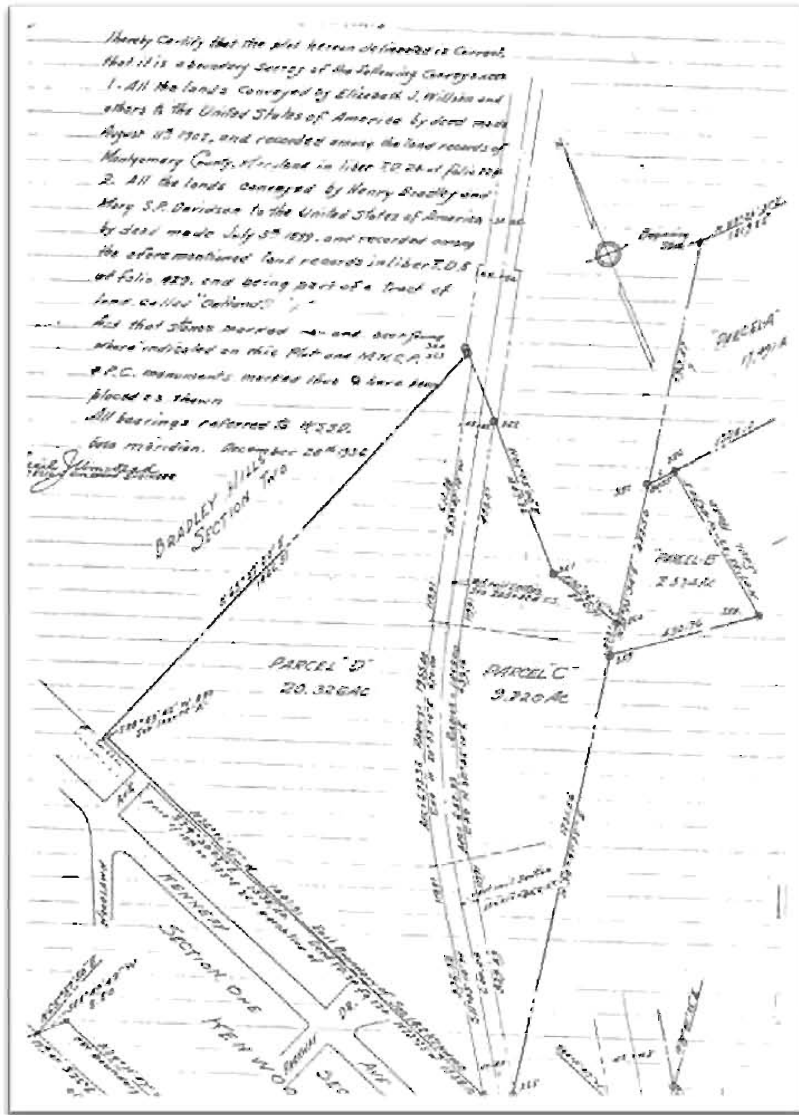
▶ 1923 Insurance Atlas





► 41 Experimental Farm Buildings





► 1936 Plats for M-NCPPC

1862

1907

1936

1957

2007

1937 Revocable Permit

- 32 acres
- Deeded to M-NCPPC in 1951

REVOCABLE PERMIT

Pursuant to an Act of Congress (49 Stat. 1921), the Maryland-National Capital Park and Planning Commission is hereby permitted, subject to revocation by the Secretary of Agriculture, to use, occupy, improve, and develop for park, parkway, or play-ground purposes, the lands in Montgomery County, Maryland, described as follows:

PARCEL "B"

All that part of a tract of land conveyed by deed made July 5, 1899, from Henry Bradley Davidson and Mary S. P. Davidson, his wife, to the United States of America, recorded among the Land Records of Montgomery County, Maryland, in Liber T.D. 9 at folio 429, and described and bounded as follows:

BEGINS at a Monument numbered 356, planted at the end of the fourth (or $N 03^{\circ} 30' 00'' E$, 28.75 perch) line of heretofore mentioned conveyance; thence leaving the outlines of said conveyance and running across the above mentioned conveyance with the prolongation of the fifth line reversely and corrected, $S 89^{\circ} 34' 31'' W$, 36.20' to a Monument numbered 357, planted at a point of intersection of said fifth line reversely extended to the second (or $S 40^{\circ} 25' 00'' E$, 71.32 perch) line of aforementioned conveyance; $S 35^{\circ} 20' 24'' W$, 495.50' by a line reversely extended to a Monument numbered 359; $S 80^{\circ} 49' 56'' E$, 430.75' to a Monument numbered 358 at the point where this line intersects the west side of Seal Road so-called; $N 07^{\circ} 05' 27'' E$, 459.00' to the Monument numbered 356, the place of beginning, containing 2.074 acres of land, more or less, and designated as Parcel "B" on the attached plat showing this tract marked in blue.

PARCELS "C" & "D"

All that part of a tract of land conveyed by deed made August 11, 1902, from Elizabeth J. Wilson, and others, to the United States of America, and recorded among the Land Records of Montgomery County, Maryland, in Liber T.D. 24 at Folio 224, and described and bounded as follows:

BEGINNING at a point marked by a Monument numbered 358, thence $N 35^{\circ} 25' 34'' E$, 87.31' to a Monument numbered 360; $N 50^{\circ} 05' 15'' W$, 226.71' to a Monument numbered 361; $N 01^{\circ} 00' 00'' E$, 447.25' to a Monument numbered 362; $N 01^{\circ} 05' 00'' E$, 181.63' to a Monument numbered 363; $N 01^{\circ} 05' 00'' E$, 14.25' by a line reversely extended to a Monument numbered 364; $S 63^{\circ} 27' 20'' E$, 1466.51' by a line reversely extended to a point on part of 17th or $S 25^{\circ} E$ 200 perch line of Friendship; $S 80^{\circ} 49' 42'' E$, 8.80' to a point on the east boundary of Sections 1 and 2 of Woodlawn; $S 24^{\circ} 11' 47'' E$, 1441.91' by a line reversely extended to a point on the west line of right-of-way of the Metropolitan Southern Railroad Company; $S 34^{\circ} 11' 47'' E$, 93.25' by a line reversely extended to a point within said right-of-way; $N 34^{\circ} 41' 20'' E$, 20.55' to a Monument numbered 365; $N 34^{\circ}$

1862

1907

1936-1937

1957

2007