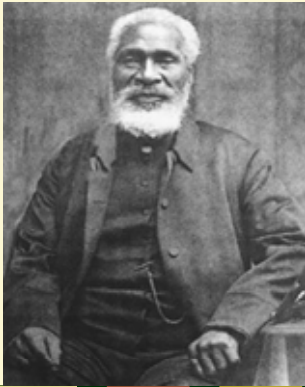


# Josiah Henson Special Park Staff Draft Master Plan

(Uncle Tom's Cabin Special Park)



Park & Trail Planning Section  
Cultural Resources Stewardship Section  
Montgomery County Department of Parks

Montgomery County Planning Board Session - Item #18  
16 September 2010



JOSIAH HENSON SPECIAL PARK MASTER PLAN

## STAFF RECOMMENDATIONS

- Approval to change park name from Uncle Tom's Cabin Special Park to Josiah Henson Special Park
- Approval to publish staff draft for purposes of Planning Board Public Hearing, to be scheduled October 28, 2010



Top - rear view of Riley Farm Cabin  
Bottom - front view of Riley Farm Cabin





**Josiah Henson  
Special Park**

Montgomery County, Maryland



## Current Park

### THE SITE

- Both parcels = 1.5 acres
- Special Park
- Old Georgetown Road in North Bethesda
- Southern Maintenance Region
- Adjacent to White Flint Sector Planning Area



## Current Park



**Josiah Henson Special Park**  
1.02 acres acquired in January 2006



**Rozier Property**  
.5 acre acquired in June 2009



*Josiah Henson Site, Maryland*



## Current Programs on Site

### Special Request Tours

### Public Events

- Montgomery County Heritage Days (June)
- Maryland Emancipation Day Celebration (November)

### Private Events

- Maryland House and Garden Pilgrimage (April/May)
- Luxmanor Citizens Association Annual Art Show (April)



## Current Programs on Site

### Archaeology

Work is being conducted and will inform and guide future site development, landscape planning and interpretation

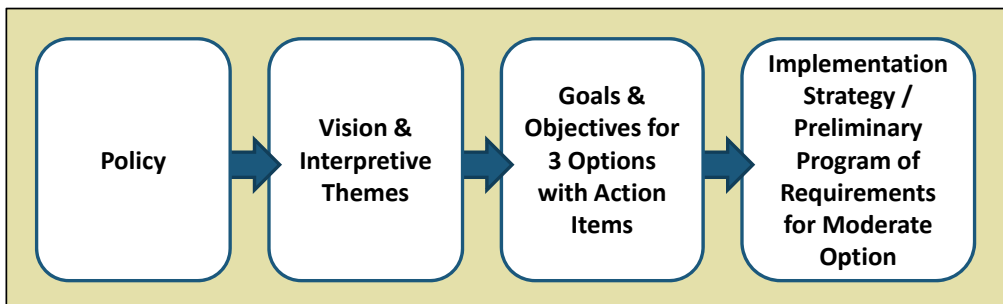
- Staff Led
- Volunteer Driven



## Purpose of the Plan

The purpose of the Plan is to establish

- A site-specific Vision
- A process and means for gathering and responding to public input
- Guidance in the short term for ongoing operations and programming
- Guidance to the upcoming Facility Plan



# Project Schedule

2006	Riley Farm Property Acquired
2009	Rozier Property Acquired
2010	MASTER PLANNING
MAY	✓ Launched Website on <a href="http://www.ParkPlanning.org">www.ParkPlanning.org</a>
JUNE	✓ 6/10 – Planning Board Roundtable Plan Objectives, Outreach and Schedule to Planning Board ✓ 6/15 – Community Meeting #1 Plan Objectives to the Community for Input
JULY / AUGUST	✓ Develop concepts and draft plan, based on public input Public comments received ✓ CANCELLED 7/26 – Community Meeting #2 ❖ 8/24 – Community Meeting #2 <input type="checkbox"/> Staff Draft Concept Plan Development
SEPTEMBER	<input type="checkbox"/> 9/16 – Staff Draft to Planning Board Request a Public Hearing Date. Staff Draft posted on the website.
OCTOBER	<input type="checkbox"/> 10/28 – Planning Board Public Hearing
NOVEMBER	<input type="checkbox"/> 11/18 – Planning Board Work Session and Plan Adoption Approval/Adoption Final Park Master Plan

❖ **Note:** Following Master Plan Adoption, a separate Facility Planning project (30% Design) will be initiated by the Park Development Division.

❖ Indicates Opportunities for Public Input

# Public Process

## Public Meeting Input

- June 15, 2010
- August 24, 2010



Vision and Issues by Category, Summary and the Plan Responses



# Staff Draft Recommendations

## VISION

Adopt a facility-specific vision for this cultural site.

### A public museum that ...

- **celebrates** the challenging and inspiring life of Reverend Josiah Henson, the man who inspired the fictional character "Uncle Tom,"
- **educates** visitors about the enslavement of African Americans in Maryland and
- **promotes** a greater appreciation of history in Montgomery County.



Top - An archaeology volunteer at work.  
Bottom - Archaeological excavation in the backyard of the Josiah Henson Site.



# Staff Draft Recommendations

## Interpretive Themes for Exhibits and Programs

### *The Reverend Josiah Henson and the African American Slave Experience in Montgomery County*

#### Early Life of Enslaved Peoples

- Childhood
- Family
- Spirituality

#### Isaac Riley Plantation

- Slaveholding Family
- Plantation History - *Architecture & Landscape*
- Archaeology

#### Work & Living Conditions

- Travel & Independence
- Leadership & Responsibility
- Punishment & Resistance

#### Myth, History, Literature & Stereotypes

- Slave Narratives
- Harriet Beecher Stowe

#### Freedom / Emancipation

- Self-purchase
- Manumission
- Escape - *Underground Railroad*
- Free Black Communities (1800s)

# Staff Draft Recommendations

## Josiah Henson's Journeys through Maryland, 1789-1830

1. **Henson's Birthplace, 1789**  
Francis Newman Plantation, Port Tobacco, Charles County, MD
2. **Owner of Henson's Mother**  
Dr. Josiah McPherson Plantation, Charles County, MD
3. **Site of Slave Auctions near Montgomery County Courthouse, Rockville, Maryland.**
4. **Adam Robb, former owner of Henson**  
Adam Robb Plantation, Rockville, MD
5. **Site of Henson's Enslavement, 1789-1830**  
Isaac Riley Plantation, Rockville, MD
6. **Site of Henson's Spiritual Conversion**  
Newport Mill, Montgomery County, MD
7. **Marketplace frequented by Henson**  
Georgetown, Washington, DC



## North American Travels, 1795-1830

- |                          |                                     |
|--------------------------|-------------------------------------|
| 1. Montgomery County, MD | 4. Cincinnati, OH                   |
| 2. Daviess County, KY    | 5. Sandusky City, OH                |
| 3. Mississippi River, LA | 6. Buffalo, NY                      |
|                          | 7. Dawn Settlement, Ontario, Canada |

# Staff Draft Recommendations

## Plan Goals

1. Interpret Josiah Henson's life and the history of slavery in Montgomery County.
2. Retain the integrity of the historic architecture and landscape.
3. Create a safe, accessible site.
4. Develop advocacy and fundraising strategies to ensure the viability of the site.

## Implementation Options

- The **Minimum Option** equates with the current level of programming. Essentially depicts the activities now taking place at the Josiah Henson Special Park.
- The **Moderate Option** takes the park to the next level in capital improvements and interpretive programming.
- The **Maximum Option** outlines steps for more extensive capital improvements and expanded interpretive programming.



# Preferred Option

The **Moderate Option** takes the park to the next level in capital improvements and interpretive programming.

1. Fulfills the interpretive goals and potential of the historic site.
2. Maintains compatibility with the neighborhood in which it sits.
3. Achieves operational benchmarks with a reasonable request for facility-specific staff.
4. Compatible with the economic realities of the Department and County, neither accepting of a status-quo vacant house with minimal public openings nor overreaching to emulate capital outlays achievable in the private museum sector.



# Moderate Option: Implementation and Project Staging

Plan Element	Description	Short Term FY11-12	Mid & Long Term FY13-18
<b>GOAL 1</b>			
<b>Interpret Josiah Henson's life and the history of slavery in Montgomery County</b>			
<b>Objective 1.1</b> Provide interpretative programming of the Riley house, 1850s log kitchen, grounds and archaeological sites.			
Action 1	Conduct (4) annual special programs.	[White Box]	[Blue Arrow]
Action 2	Open the site to the public February through November (1) day per month.	[White Box]	[Blue Arrow]
Action 3	Hire (1) full-time employee whose office will be on the site.	[White Box]	[Blue Arrow]
Action 4	Conduct guided tours and produce and show a 5-10 minute orientation film	[White Box]	[Blue Arrow]
Action 5	Expand program opportunities and launch an interactive website.	[White Box]	[Blue Arrow]
<b>Objective 1.2</b> Conduct ongoing research into Josiah Henson (especially his experiences in Maryland, Kentucky, Louisiana, Ohio, Canada and Europe), slavery in Montgomery County, and make connections to local and regional African American history, and related topics.			
Action 1	Expand research topics to include expanded interpretive themes.	[White Box]	[Blue Arrow]
Action 2	Conduct 400 hours of research annually.	[White Box]	[Blue Arrow]
Action 3	Establish an ongoing paid collegiate internship program	[White Box]	[Blue Arrow]
Action 4	Expand the archival and library collections.	[White Box]	[Blue Arrow]
<b>Objective 1.3</b> Establish collaborations with local, regional, statewide, national and international historical organizations to support joint interpretive programming for the site.			
Action 1	Establish an interpretive advisory committee to assist in the development of the facility plan.	[White Box]	[Blue Arrow]
Action 2	Expand interpretive program coordination to include the Uncle Tom's Cabin Historic Site (Ontario, Canada), regional and national historical organizations.	[White Box]	[Blue Arrow]
Action 3	Establish a one-room research library (non-borrowing).	[White Box]	[Blue Arrow]
<b>Objective 1.4</b> Produce an orientation film focused on Josiah Henson's Maryland years and the Isaac Riley family.			
Action 1	Produce a 5-10 minute orientation film to introduce Josiah Henson, the Riley plantation history and an overview of slavery in Montgomery County.	[White Box]	[Blue Arrow]
Action 2	Show orientation film within the onsite museum exhibition.	[White Box]	[Blue Arrow]
<b>Objective 1.5</b> Design, fabricate and install museum quality exhibitions in the Riley house, 1850s log kitchen and on the grounds.			
Action 1	Riley House: Design, develop and install exhibitions with didactic panels, minimal artifacts, and low-tech interactive, such as tactical farm implements that can be handled by children.	[White Box]	[Blue Arrow]
Action 2	1850s Log Kitchen: Restore the second, rear doorway; lower the floor; restore either partially or completely the attic; and create a simulated dirt floor.	[White Box]	[Blue Arrow]
Action 3	Grounds: Design and install a kitchen garden.	[White Box]	[Blue Arrow]

KEY: "Plan and/or Design" = White Boxes and "Construct and/or Implement" = Blue Arrows

## Moderate Option: Implementation and Project Staging

Plan Element	Description	Short Term FY11-12	Mid & Long Term FY13-18
<b>GOAL 2</b>			
<b>Retain the integrity of the historic architecture and landscape</b>			
<b>Objective 2.1</b> Demolish 1960s Rozier house and garage.			
Action 1	Completion demolition of the Rozier house and garage.		
<b>Objective 2.2</b> Use historic documentation and archaeology to identify former structures and features of the plantation and make archaeology a vital element of ongoing work and future exhibits.			
Action 1	Pursue ongoing archaeological investigation.		
Action 2	Make archaeological artifacts a vibrant component of exhibit.		
<b>Objective 2.3</b> Identify and label large trees, remove non-historic plantings, and return landscape to an earlier form with known crops/planting.			
Action 1	Use landscape screening where appropriate and label old trees.		
Action 2	Alter landscape to re-create historic feel where appropriate.		
Action 3	Establish gardens (possible areas for reflection) and plantings based on historical information.		
<b>Objective 2.4</b> Preserve historic house according to historic preservation standards and applicable laws.			
Action 1	More moderate changes to the house, for use as a museum focused on Josiah Henson's story, plantation life, and slavery, also with interpretation of the Riley family and of the 1930-era architecture. This approach would entail a few costs over what is absolutely necessary and would have a more pronounced effect on the historic resources. <i>Note - staff's recommendation places interpretive emphasis on the first half of the 19th century more than on 1936. (See Appendix 1 "Alternatives" taken and modified from the Historic Structure Report, 2006, to reflect staff priorities.)</i>		
<b>Objective 2.5</b> Expand the park to reflect its historic and/or cultural landscape significance.			
Action 1	Consider possible future expansion of existing park boundary based on presence of contributing historical and/or archaeological features as shown on aerial photography from 1927 and 1943. These features may include the farm road and former outbuildings with their adjacent land area. Future park acquisition assumes willing sellers, fair market value as determine through three independent appraisals, and available funding.		

KEY: "Plan and/or Design" = White Boxes and "Construct and/or Implement" = Blue Arrows

## Moderate Option: Implementation and Project Staging

Plan Element	Description	Short Term FY11-12	Mid & Long Term FY13-18
<b>GOAL 3</b>			
<b>Create a safe, accessible site.</b>			
<b>Objective 3.1</b> Make this site a safe park and protect its resources.			
Action 1	Remove sight-limiting shrubs, add motion-detection lighting, and better secure house and contents against potential vandals.		
<b>Objective 3.2</b> Create onsite parking spaces.			
Action 1	Create (5) parking spaces: (3) staff spaces and (2) ADA public spaces.		
Action 2	Create a bus pull-off for 55-passenger coach buses and school buses.		
<b>Objective 3.3</b> Design and implement adequate public access on Old Georgetown Road.			
Action 1	Create a separate access road for Parks maintenance staff.		
Action 2	Create a pedestrian-only access from Old Georgetown Road utilizing the existing driveway into the Riley house and grounds.		
Action 3	Create a pedestrian path from the parking lot on the former Rozier property to the Riley house and grounds.		
Action 4	Eliminate the circular driveway on the Riley grounds and restore the historic spring access.		
Action 5	Identify ADA compliant access points.		
<b>Objective 3.4</b> Install restroom facilities.			
Action 1	Install (2) permanent ADA restrooms (male and female) on the existing Riley garage site.		
<b>Objective 3.5</b> Create a Visitor Orientation/Information Point onsite.			
Action 1	Install a standard Parks information kiosk on the former Rozier property.		
Action 2	Install (up to 3) interpretive signs.		
Action 3	Use the existing garage on the Riley grounds as a visitor orientation site with moderate design changes.		
<b>Objective 3.6</b> Install park amenities for the enjoyment of visitors.			
Action 1	Install bike racks in the parking area.		
Action 2	Install outdoor benches.		

KEY: "Plan and/or Design" = White Boxes and "Construct and/or Implement" = Blue Arrows

# Moderate Option: Implementation and Project Staging

Plan Element	Description	Short Term FY11-12	Mid & Long Term FY13-18
<b>GOAL 4</b>			
<b>Develop advocacy and fundraising strategies to ensure the viability of the site.</b>			
<b>Objective 4.1</b> Establish income streams to support ongoing programming and staffing.			
Action 1	Establish income streams from (3) areas: Government agencies; Solicit funding sources from items such as park tax, bonds, etc. Business model: Establish a gift shop onsite; enlist benefits from future private developers (as available); and generate revenue from programming such as fees charged for special programs, group tours, etc.		
Action 2	Contract a development fundraising consultant to identify target funding opportunities and to fundraise.		
<b>Objective 4.2</b> Establish a volunteer corps to provide interpretive program assistance, to serve as advocates within the community and to provide pro bono services in speciality areas, such as development and advocacy.			
Action 1	Encourage the Luxmanor Citizens Association to create a committee of community members in support of the Josiah Henson Special Park.		
Action 2	Establish a volunteer corps to provide guided tours and assist with special programs.		
<b>Objective 4.3</b> Facilitate the establishment of a Friends group.			
Action 1	Develop a site-specific Friends group whose primary focus will be to support the Josiah Henson Special Park with fundraising/development activities.		

KEY: "Plan and/or Design" = White Boxes and "Construct and/or Implement" = Blue Arrows

# Outstanding Issues

## Off-site Improvements

- Safe Crossing at Old Georgetown Road and Tilden Lane
- Directional and interpretive signage for Park
- Parking at other facilities

## Connectivity

- Pedestrian connections
- Bike connections



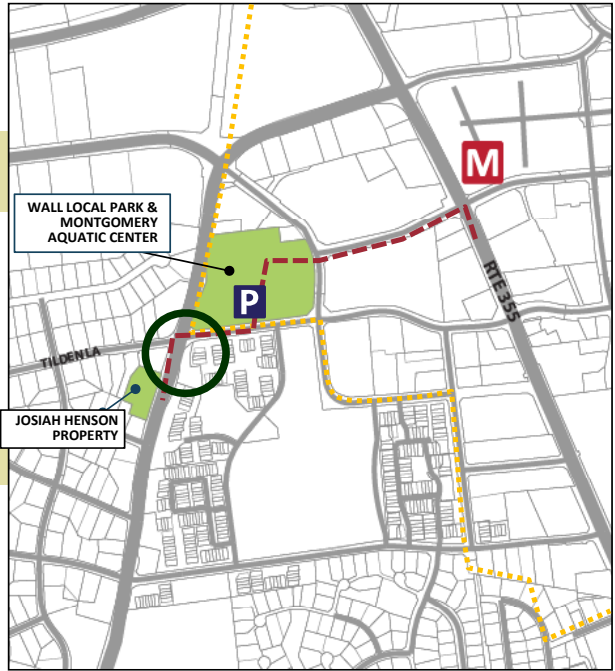
# Outstanding Issues

## Off-site Improvements

- Safe Crossing at Old Georgetown Road and Tilden Lane
- Directional and interpretive signage for Park
- Parking at other facilities

## Connectivity

- Pedestrian connections
- Bike connections



  White Flint Planning Area  
 Pedestrian Route



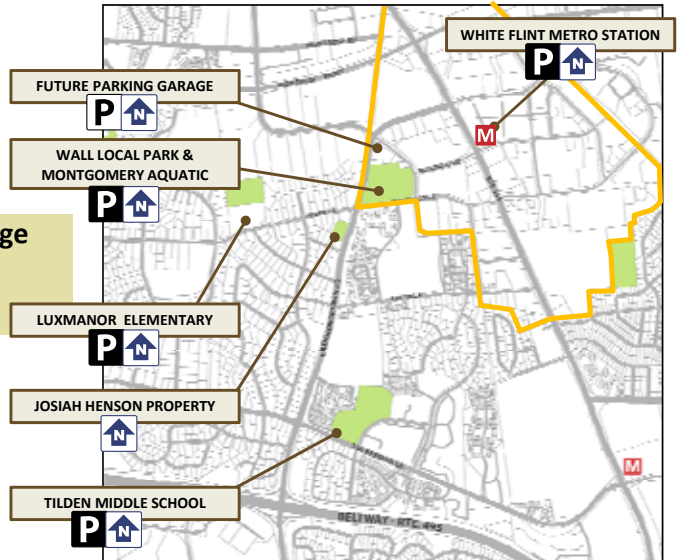
# Outstanding Issues

## Off-site Improvements

- Safe Crossing at Old Georgetown Road and Tilden Lane
- Directional and interpretive signage for Park
- Parking at other facilities

## Connectivity

- Pedestrian connections
- Bike connections



existing | proposed  
 Parking (for all) P P  
 Wayfinding Signs ↑ ↑  
 White Flint Planning Area  



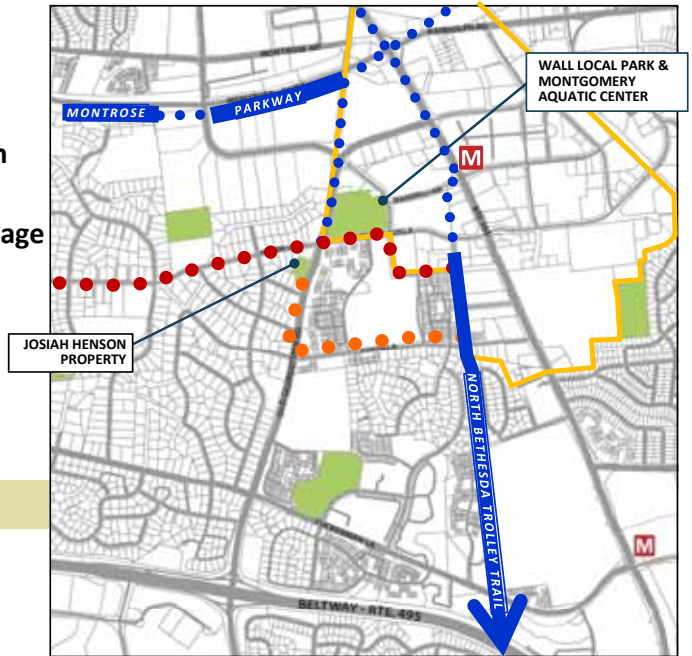
# Outstanding Issues

## Off-site Improvements

- Safe Crossing at Old Georgetown Road and Tilden Lane
- Directional and interpretive signage for Park
- Parking at other facilities

## Connectivity

- Pedestrian connections
- Bike connections



# Conclusion

In sum, the Josiah Henson Special Master Plan reflects the effort to pull together policy, history, interpretive objectives, operational needs, and public input into a policy document to guide future planning, design, construction, interpretation, and operation of this highly significant cultural resource.



Top - *Uncle Tom's Cabin* and portrait of the author, Harriet Beecher Stowe in 1881.  
 Bottom - *Uncle Tom's Story of His Life* and portrait of the author, Reverend Josiah Henson

