

# Josiah Henson Special Park Master Plan

(Formerly Uncle Tom's Cabin Special Park)

## Process & Schedule



Park & Trail Planning Section  
Cultural Resources Stewardship Section  
Montgomery County Department of Parks

Montgomery County Planning Board Roundtable Briefing

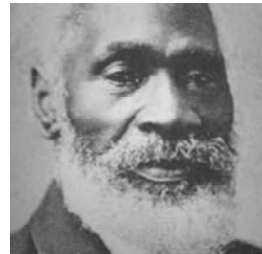
10 June 2010



PARK PLANNING & STEWARDSHIP DIVISION

## Josiah Henson Special Park Master Plan

- Need for Master Plan
- Project Process
- Project Schedule



## Need for Master Plan

### Draft Vision Statement

*An African American public museum focused on the life of Josiah Henson, that demonstrates the heroism of those who survived and eventually escaped slavery in Montgomery County as well as the inspiration their life stories provided to abolitionists such as Harriett Beecher Stowe.*



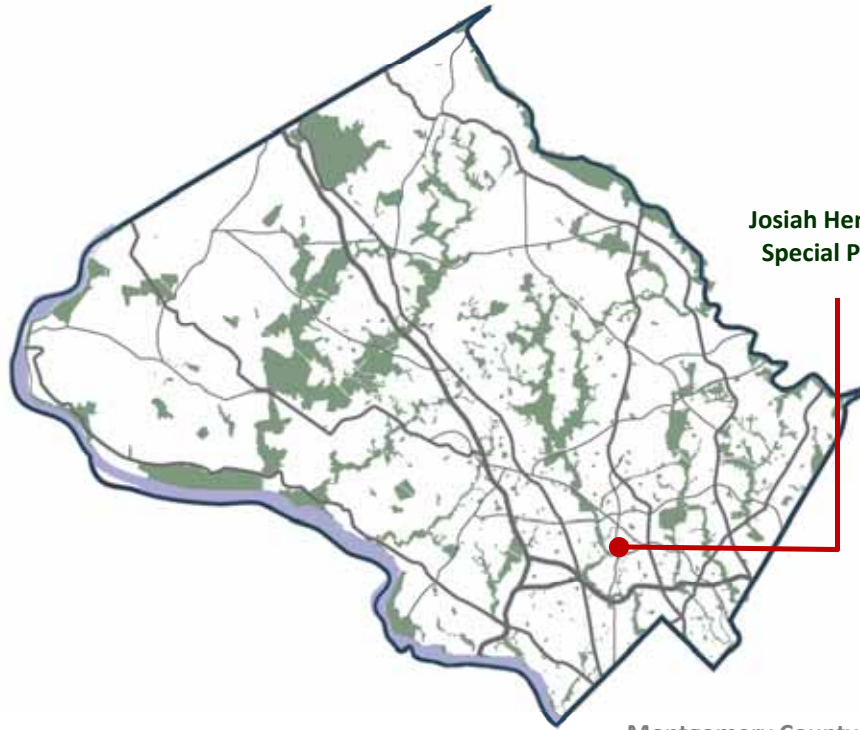
## Project Process

### Need Public Input on How to Implement the Vision.....

- *An Important Historic Site*
- *Interpretation: Henson's Life Through His Own Words*
- *Interpretation: History of Slavery in Montgomery County*



# Context



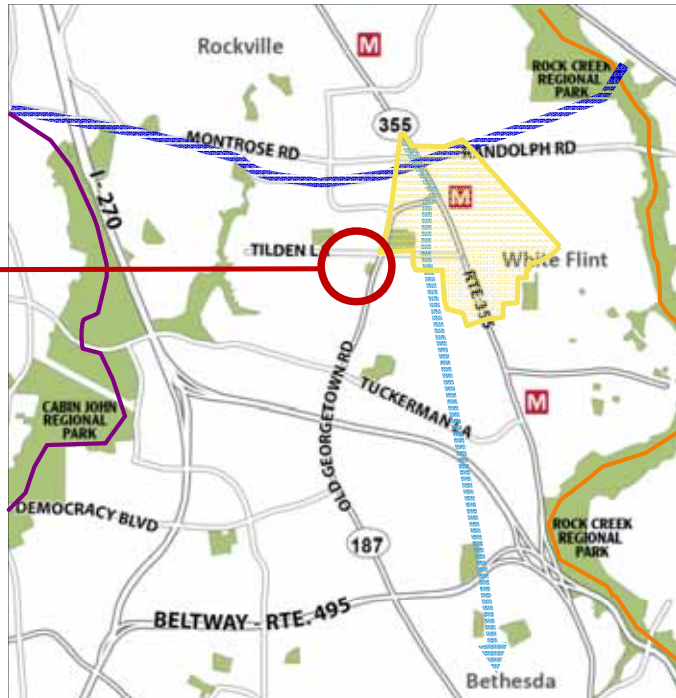
Josiah Henson Special Park

Montgomery County, Maryland



# Context

Josiah Henson Special Park



- Montrose Trail
- Rock Creek Hiker/Biker Trail
- North Bethesda Trolley Trail
- Cabin John Natural Surface Trail



# Context

**Josiah Henson Special Park**  
1.02 acres acquired in Jan. 2006



*Josiah Henson Site, Maryland*



# Context



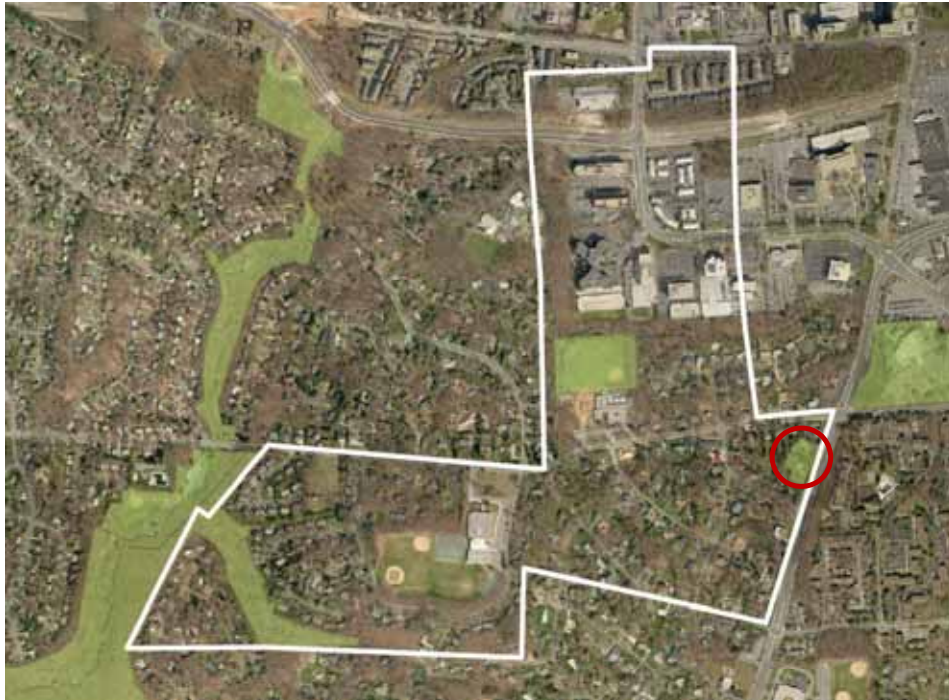
**Rozier Property**  
.5acre acquired in June 2009



*Josiah Henson Site, Maryland*



## Context



*Isaac Riley Property* – based on 1863 equity records

## Historical Interpretation

### Meeting Josiah Henson

- Slave
- Minister
- Fugitive
- Freedman
- Conductor
- Author
- Abolitionist



### “Uncle Tom’s Cabin” the Facts

- Isaac Riley home built (1800 – 1815)
- Josiah Henson worked on Riley plantation (1795 – 1830)
- Log Cabin built (1850 – 1851)



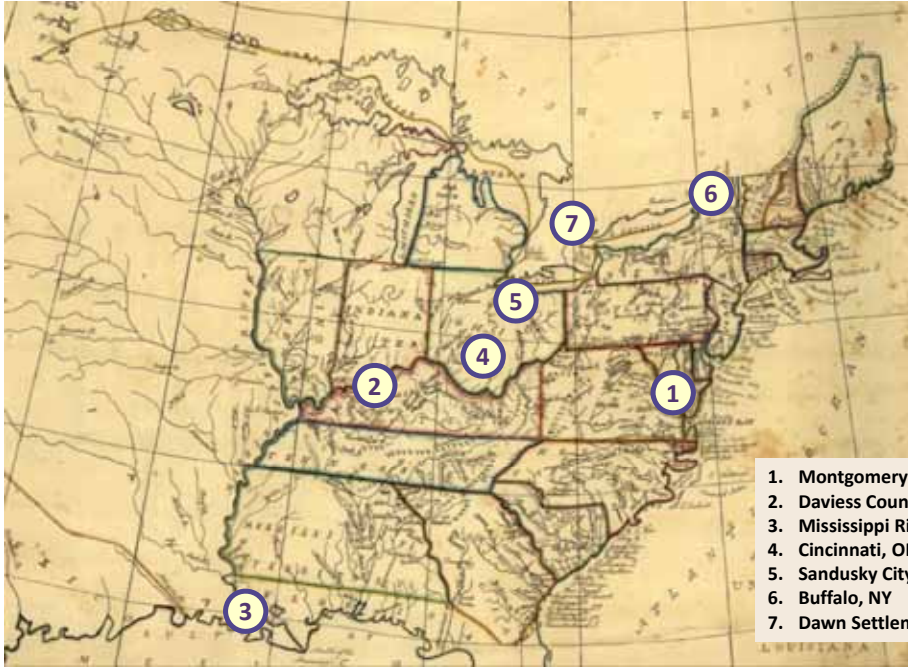
### “Uncle Tom’s Cabin” the Myth

- Not Josiah Henson’s home



# Historical Interpretation

## Josiah Henson's Journeys, 1795-1830



1. Montgomery County, MD
2. Daviess County, KY
3. Mississippi River, LA
4. Cincinnati, OH
5. Sandusky City, OH
6. Buffalo, NY
7. Dawn Settlement, Ontario, Canada

# Historical Interpretation

## Existing Parks African American Interpretive Sites

### Josiah Henson Historic Site

- Slavery
- Josiah Henson Story

### Underground Railroad Experience Trail

- Freedom Seekers
- Quaker Heritage

### Oakley Cabin African American Museum & Park

- Post Emancipation Era



## Current Programs on Site

### Special Request Tours

### Public Events

- Montgomery County Heritage Days (June)
- Maryland Emancipation Day Celebration (November)



### Private Events

- Maryland House and Garden Pilgrimage (April/May)
- Luxmanor Citizens Association Annual Art Show (April)



## Current Programs on Site

### Archaeology

Work is being conducted and will inform and guide future site development, landscape planning and interpretation

- Staff Led
- Volunteer Driven



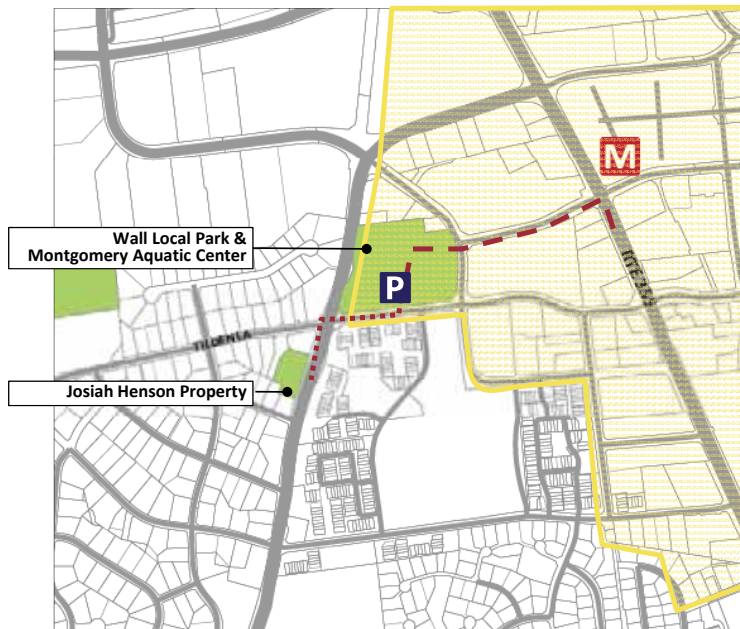
# Current Programs on Site



# Current Programs on Site

## Access

- Vehicular
- Pedestrian



 White Flint Planning Area  
 Pedestrian Route



## Current Park Responsibilities

### Programming

- *Cultural Resources Stewardship Section*

### Improvements

- *Central Maintenance*

### Grounds

- *Southern Region*

### Security

- *Park Police*



## Planning Policy History

### Planning Board Approved Documents

- **2010 – *White Flint Sector Plan*** - “The redesign of Wall Local Park should . . . include a pedestrian connection to the Josiah Henson/Uncle Tom’s Cabin site, a cultural site of international significance, about one quarter-mile south on Old Georgetown Road and one half-mile from the Metro station.

This Plan envisions a public/private partnership with adjacent properties to relocate the surface parking within a parking structure built in conjunction with new residential development such as a public/private agreement.”

- **2005 – *Land Preservation, Parks and Recreation Plan*** - “Integrate interpretive programs into park master plans.”

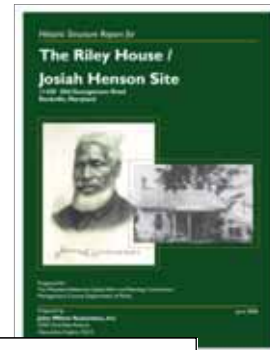
- **1979 – *Master Plan for Historic Preservation*** - Resource #30/6, Individual Designation: “Uncle Tom’s Cabin.” Subject to Chapter 24-A of the Montgomery County Code, Historic Resources Preservation Regulations



## Planning Policy History

### Staff Documents

- **2008 – *Historic Structure Report for The Riley Farm / Josiah Henson Site*** - Three (3) alternative treatment plans are proposed to lay the groundwork for schematic design in accordance with Secretary of the Interior’s Standards for Historic Preservation and to support historical exhibits on Henson and slavery.
- **2006 – *Artifact to Attraction a Strategic Plan for Cultural Resources in Parks*** - A “Top 20 Priority Project” with the long-term goal of public interpretation.



## Defining Master Plan Issues

### Stakeholders

- *Achieving plan consensus among major stakeholders – adjacent residents, Luxmanor Neighborhood, African American Community, and M-NCPPC*

### Compatibility

- *Surrounding land-use – single family residential, R-200 Zone*
- *Adjacent private, land-use pattern does not reflect historic landscape*
- *Effect of park on adjacent property owners and surrounding neighborhood*
- *Effect of adjacent property owners and surrounding neighborhood on park*



## Defining Master Plan Issues

### Operational

- *Small, constrained site*
- *Safe, adequate pedestrian and vehicular access*
- *Security*
- *Way-finding and signage*
- *Severe constraints on M-NCPPC's future operating and capital budgets*

### Regulatory

- *Historic Preservation/Chapter 24A*
- *Forest Conservation and Environmental Site Design*
- *Noise*
- *American Disabilities Act (ADA Compliance)*



## Project Schedule

2010	MASTER PLANNING	FACILITY PLANNING
2006	Riley Farm Property Acquired	
2009	Rozier Property Acquired	
MAY	✓ Launched Website on <a href="http://www.ParkPlanning.org">www.ParkPlanning.org</a>	
JUNE	✓ 6/10 – Planning Board Roundtable Plan Objectives, Outreach and Schedule to Planning Board ❖ 6/15 – Community Meeting Plan Objectives to the Community for Input	
JULY	<input type="checkbox"/> Develop Concepts and Draft Plan, based on public input Public comments received <input type="checkbox"/> 7/29 – Staff Draft of Plan to Planning Board Request a Public Hearing Date. Staff Draft placed on the website.	
AUGUST	❖ Thirty day Public Comment Period	
SEPTEMBER	❖ 9/23 – Public Hearing	
OCTOBER	<input type="checkbox"/> 10/29 – Planning Board Work session	
NOVEMBER	<input type="checkbox"/> 11/18 – Planning Board Work session and Plan Adoption Approval/Adoption Final Park Master Plan	<input type="checkbox"/> Facility Planning Process to be initiated <input type="checkbox"/> November 1, 2010 – Notice to proceed to facility plan consultants (Note: Date comes from Procurement)
2011		<input type="checkbox"/> Design Engineering and Construction to follow

❖ Indicates Opportunities For Public Input

## Public Outreach

### E-communications

- **Website & Emails**
  - www.ParkPlanning.org
  - Centralized location for information about this Master Plan process
- **Mailings**
  - Direct Mailing (*sent to over 2,800 residents within 1-mile radius*)
  - Civic Groups/HOA
  - Regional Service Centers
  - Adjacent Schools
  - Friends of White Flint



## Next Step

### Community Meeting

June 15, 2010  
 7:00 pm  
 Tilden Middle School, Rockville

