

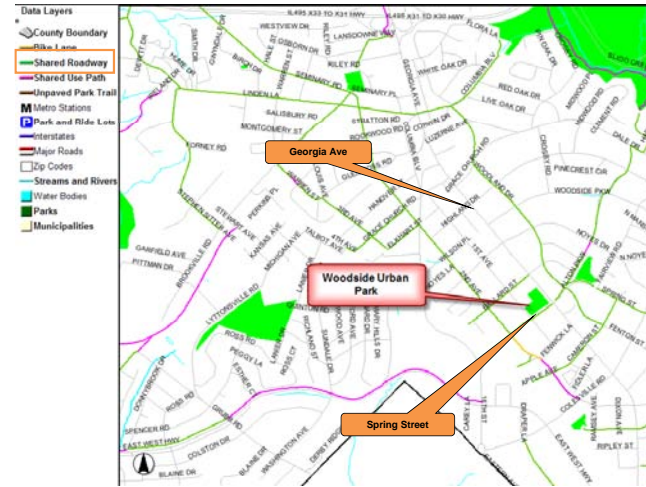
PEDESTRIAN AND BICYCLE CIRCULATION

General Goals

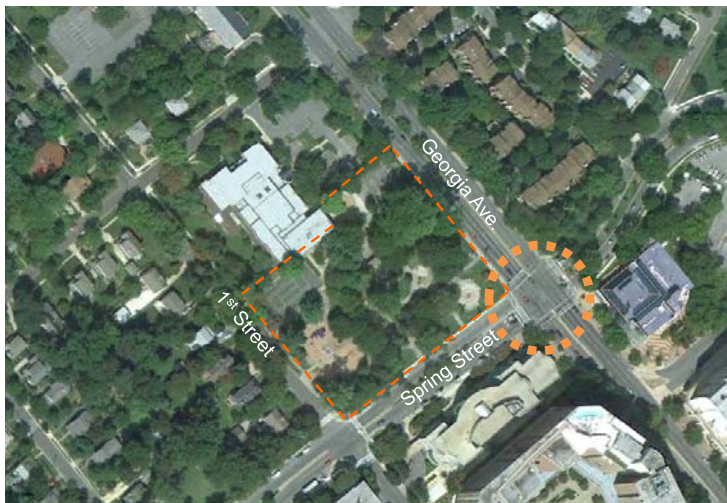
- ✓ Provide Safe Universal Access to the Park
  - ✓ Pedestrians
  - ✓ Bicyclists
- ✓ Minimized Conflicts Between Pedestrian and Vehicles
- ✓ Provide Integrated Bus Stops
- ✓ Provide Integrated Bicycle Parking
- ✓ Integrated Exterior Park Walks
- ✓ Integrate Street Crossings
- ✓ Improve Gateway Entrance



EXISTING BICYCLE ROUTS



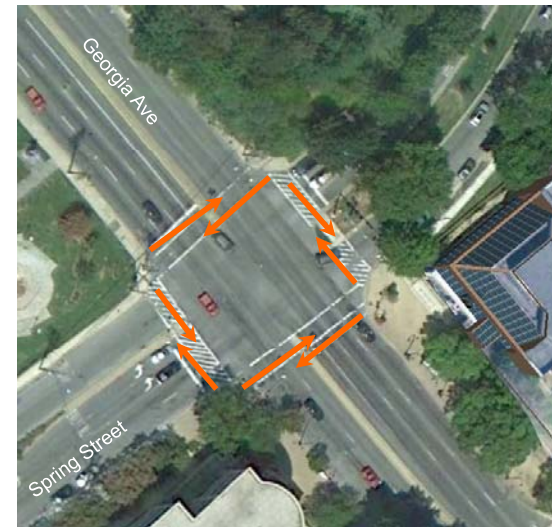
CIRCULATION STUDY



CIRCULATION STUDY

Crossings

- 77
- 54
- 78
- 65
- 205
- 233
- 179
- 184



**CIRCULATION STUDY**

- Faded Crosswalk markings
- Deteriorating Refuge
- Ramp ADA Compliance.
- Left Turning Vehicles on Georgia Avenue Stopping in Crosswalk



**CIRCULATION STUDY**

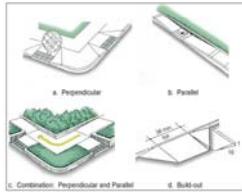
- Sidewalk Widths
- Restricted Pedestrian Access
- Public Transportation Stops



**CIRCULATION STUDY**

RECOMMENDATIONS

- Crosswalk Markings
- Realign Crosswalks
- Pedestrian Refuges
- ADA Compliant Ramps.
- Additional Signage
- Widen Walks
- Create Gateway Plaza
- Provide Bike Racks
- Improve Bus Access



**CIRCULATION STUDY**

RECOMMENDATIONS

- Create Gateway Plaza
- Provide Bike Racks
- Improve Bus Access

